

Netgate 2100

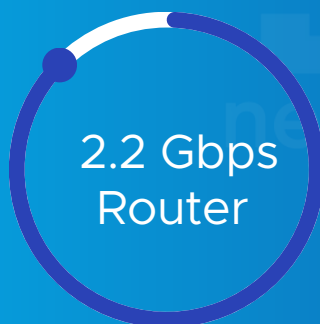
Security Gateway Appliance

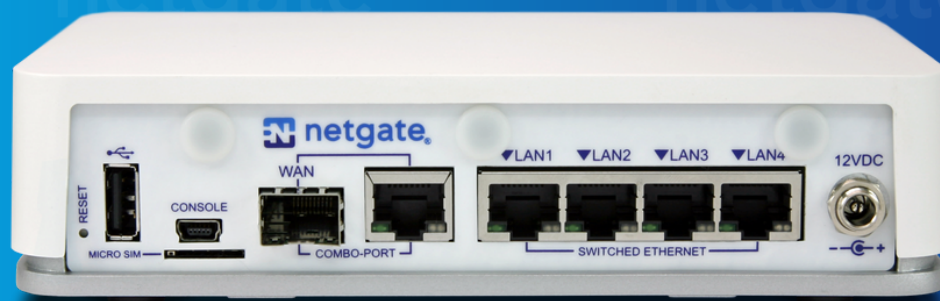
Pound-for-pound, the Netgate 2100 Security Gateway with pfSense® Plus software delivers unbeatable performance and flexibility in its class. Experience high-performance firewall, VPN, and router capabilities, easy GUI management, and a robust feature set with no artificial limits or add-ons required to make your system fully functional and no additional usage or feature-based pricing.

It is ideal for home, remote worker, and small business deployments that require more compute resources to support the use of multiple pfSense add-on packages and VPN performance to support multiple-user and site-to-site connections. Featuring a Dual-core ARM Cortex A53 1.2 GHz CPU, a dedicated 1 Gbps WAN port (RJ45/SFP combo), (4) 1 Gbps Marvell switch ports, 4 GB of DDR4 RAM, and upgradeable storage.



Highest Performance in its Class





- **Dual-core ARM v8 64-bit Cortex A53 CPU at 1.2 GHz**

Delivers 2.20 Gbps routing for common iPerf3 traffic and over 964 Mbps of firewall throughput.

- **Flexible WAN/LAN Configurations**

Use a combination of (5) 1 Gbps ports for a variety of WAN/LAN configurations including a dedicated (1) Gbps WAN RJ45/SFP combo port

- **Compact Size and Low Power Draw**

A compact form factor, low power draw, and silent operation allow it to run unnoticed when placed on a desktop or wall mount

Specifications

CPU	Marvell Armada 3720 (88F3720) ARMv8-A 64-bit Cortex A53 @ 1.2GHz with NEON SIMD and FPU
CPU Cores	Dual Core
Networking	<ul style="list-style-type: none">- One 1 Gigabit Ethernet WAN port (RJ45 / SFP Combo)- Four 1 Gigabit Ethernet LAN ports (Marvell 88E6141 Switch) LAN ports can be repurposed for additional WAN ports
Storage	8GB eMMC Flash on board Factory-upgradable to 32 GB M.2 SATA 2242 SSD (not NVMe compatible)
Memory	4 GB DDR4 (not expandable)
Expansion	<ul style="list-style-type: none">- 1x M.2 'B' key sockets (SSD, LTE)- 1x miniPCIe (WiFi)- microSIM slot
Console Port	MiniUSB (console cable included)
USB Ports	1x 2.0 port
LED	3x full color RGB LEDs
Enclosure	Desktop 1.7" (42.2 mm) tall x 4.25" (108 mm) deep x 6.8" (172.7 mm) wide with integrated keyholes for wall mount, 3x SMA-sized antenna holes.
Cooling	Passive
Power	<ul style="list-style-type: none">- External ITE P/S AC/DC 100-240V, 50-60 Hz, 12V 2.0A, threaded barrel connector- AC Inlet: IEC320-C7 (2 PIN)- One US, UK, EU or ANZ power cord included- US Power Cord: NEMA 1-15P to IEC320-C7- UK Power Cord: BS 1363 to IEC320-C7- EU Power Cord: CEE7/16 to IEC320-C7- ANZ Power Cord: AS 3112 (ungrounded) to IEC320-C7
Environment	32°F (0°C) to 122°F (50°C)
Certifications	CE, FCC (Class B), RoHS, UL, RCM, VCCI, UKCA

Performance Benchmark Comparisons ¹

IPERF Traffic ²

Netgate 1100

- L3 Forwarding: 927 Mbps
- Firewall: 607 Mbps
- IPsec VPN: 247 Mbps
(AES-128-CBC + SHA1)

Netgate 2100

- L3 Forwarding: 2.20 Gbps
- Firewall: 964 Mbps
- IPsec VPN: 254 Mbps
(AES-128-CBC + SHA1)

IMIX Traffic ³

- L3 Forwarding: 472 Mbps
- Firewall: 191 Mbps
- IPsec VPN: 90 Mbps
(AES-128-CBC + SHA1)

- L3 Forwarding: 598 Mbps
- Firewall: 249 Mbps
- IPsec VPN: 90 Mbps
(AES-128-CBC + SHA1)

¹ Refer to <https://www.netgate.com/products/appliances/> for the latest performance benchmarks. All performance tests are based on maximum memory configuration and base model port configuration (no port expansion). Throughput measurements are based on maximum bidirectional traffic across all available ports.

³ Basic Traffic (Primarily Data Download): iPerf3 traffic is TCP - 1460 byte payload and TCP framing.

⁴ Complex Traffic (Voice, Data, Video): Simple IMIX traffic is sets of 7 (40) byte packets, 4 (576) byte packets, 1 (1500) byte packets, plus Ethernet