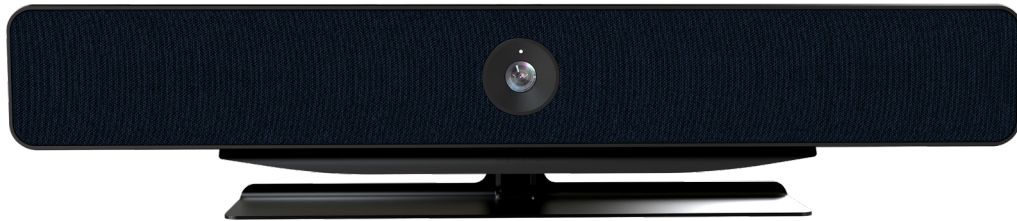


C30R 4K All-in-One Conference SpeakerMic Cam



UHD Image



Speaker Tracking



Closeup Group



Auto Framing



Daisy-Chain with SpeakerMic



All-in-One Collaboration



Full Duplex

NEARITY C30R is a new generation conference speakermic. It has powerful AI functions such as speaker tracking, close-up group, and auto-framing. It is equipped with a 120° super wide-angle lens and supports 4K@30fps video calls. With the help of 3A audio algorithm and the built-in 5-element 180° microphone and high-definition full band speaker, users can realize high-quality full-duplex calls within 5 meters.

Product Features

Artificial Intelligent Features

Powered by AI algorithm, C30R is featured with intelligent features such as auto-framing, close-up group and speaker tracking.

4K Image Clarity

Ultra HD clear image makes you feel like having a face-to-face meeting.

AI Noise-Suppression Technology

AI noise-suppression technology greatly improve conference experience.

Daisy Chain

Daisy chain with A20 speakermics to cover larger conference room.

- 4K@30fps,120°Ultra Wide Lens
- Speaker Tracking/Close-Up Group
- 5-Element MEMS Microphone Array
- Noise-Suppression/Echo Cancellation/AGC
- Effective Sound Pickup Range 5m
- High Definition Full Band Speaker
- Daisy Chain Supported
- Mount On Wall/On The Screen/On A Surface
- USB Plug and Play

Nearity C30R Technical Specifications

Camera Features

- f/1.8 aperture
- sensor: Sony 1/2.8 inches CMOS,
- maximum pixels: 8MP"
- 2.2mm fixed-focus
- FOV(D):120°
- FOV(H): 110°
- FOV(V): 75°

Video Characteristics

- lens distortion correction supported
- anti-flickering supported
- automatic white balance and exposure supported
- 3D noise suppression supported
- UHD (4K)
- aspect ratio: 16:9
- YUV: max to 480P@30fps
MJPEG: max to 1080P@30fps
H264: max to 2160P@25fps"
- speaker tracking supported
- closeup group supported
- auto framing supported

Microphone Features

- 5-element 180° microphone array
- -38dBV/Pa 94dB SPL@1kHz
- 63dBV/Pa 94dB SPL@1kHz,A-weighted
- effective pickup distance: 5m

Speaker Characteristics

- rated output power: 4Ω / 5W
- speaker frequency response: 160Hz ~20kHz
- speaker volume: 80±3dB(800,1000,1200,1500Hz)
- THD ≤3%

Audio Characteristics

- direction of arrival(DOA)supported
- beamforming supported
- maximum background noise suppression:18dB
- full-duplex technology
- echo cancellation supported
- automatic gain control (AGC) supported
- reverberation suppression supported

Daisy Chain

- POE UTP RJ45 (CAT6)
- maximum daisy chain units: 4 units of A20

Physical Characteristics

- height: 81mm (3.2 inches)
- width: 570mm (22 inches)
- depth: 77mm (3 inches)"
- net weight: 2033g(incl. brachet 250g)
- gross weight: 3410g
- color: lunar rock gray
- desktop brachet(standard)/TV brachet (optional)/ wall brachet(optional)

Remote Control

- IR remote control
- Please use the remote control at a 90° angle in front of the device

Power and Connectivity

- external power supply: DC 48V/1.35A
- compatible operating systems: Windows/ Mac/Linux
- USB port: USB2.0 Type-C

*All tech specs are subject to changed without notice.